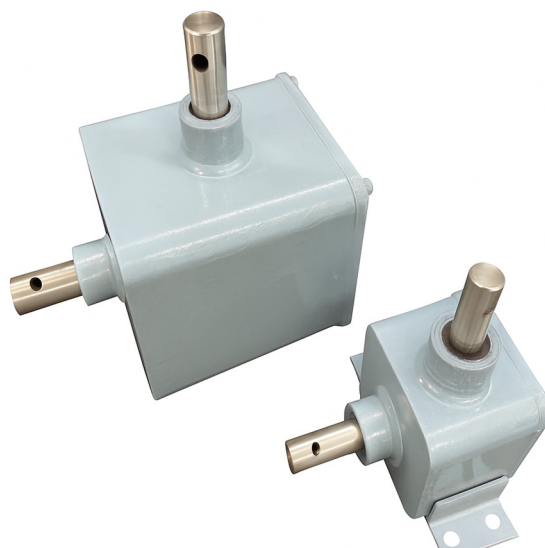


## Bevel Gearbox

Our **Bevel Gearbox** is fully enclosed within an epoxy-coated steel housing, sealed with a hard-set rubber gasket to withstand prolonged submersion.

To handle greater axial loads from the rigid reach rod above, the input shaft of our **Bevel Gearbox** extends beyond the bevel gear intersection, allowing it to be supported at both ends by roller and thrust bearings. This ensures smoother operation and an extended service life cycle.



## Worm Gearbox



Our **Worm Gearbox** is fully sealed to meet IP67 or IP68 enclosure standards, available in cast iron or ductile iron housing with epoxy polyurethane coating, as well as in stainless steel construction.

High-efficiency needle roller bearings, combined with grease lubrication, enhance both torque output and service life in demanding applications.

### TASARO SINGAPORE PTE LTD

1 Bukit Batok Crescent, #03-55 WCEGA Plaza, Singapore 658064

Phone: +65 6570 8284 | E-mail: [info@tasaro.com](mailto:info@tasaro.com)

TBC25-V1-B06