



Extendle Series

Manual Hydraulic Control (MHC)

Stand Alone System Without HPU

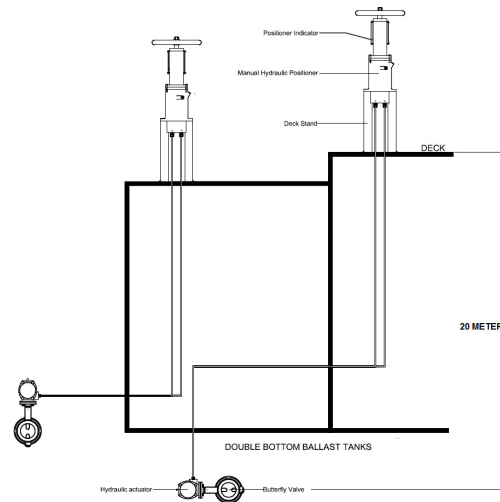


Illustration on board a semi-submersible

Key Features

- Redundant manual control during emergency for critical valves
- Option to mount with common quarter-turn limit switches
- Fully-enclosed highly-visible position indication
- Advantages over mechanical reach rod system:
 - ⇒ Shorter operating time due to lesser number of turn
 - ⇒ Cost saving for
 1. remote valve located far away
 2. line of control goes through many twists & turns
- Low operating torque, weather-proof rugged design
- Work with valve interlocking system